



HENLEY ON HUDSON

AT PORT IMPERIAL  
WEEHAWKEN, NEW JERSEY

## TOWNHOME

### RESIDENCE A

#### Residence Features

2,646 square feet

3 Bedroom Suites  
3 Full Baths, 2 Powder Rooms

Grand Circular Staircase

Private Elevator

Fireplace

Gourmet Kitchen with Granite Countertops  
and Viking Appliances

Dining Room with Butlery and Wet Bar

Riverview Terrace

Garden Balcony with Gas Line

Sitting Area

Den

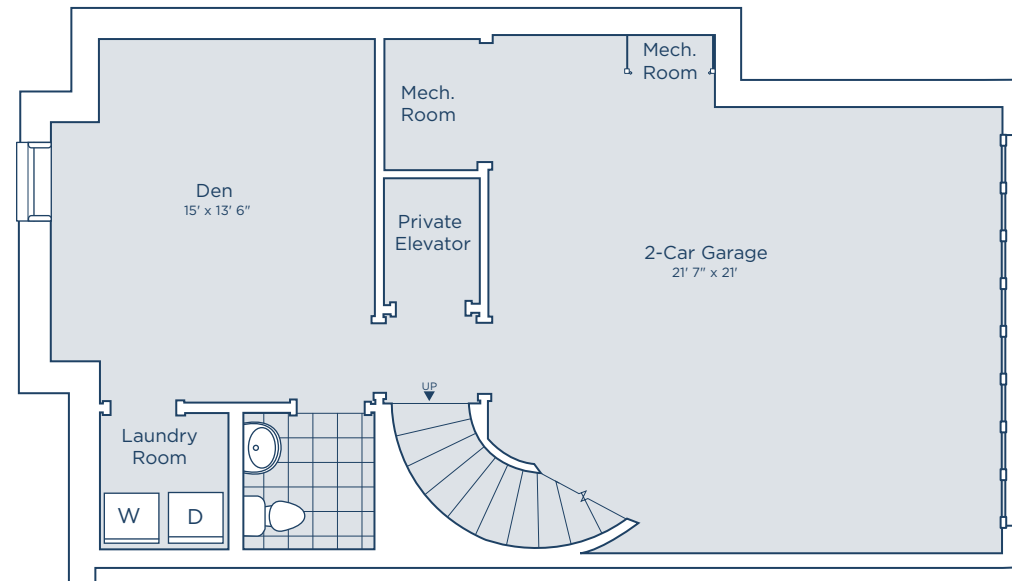
4 Walk-In Closets

Smart Home Technology

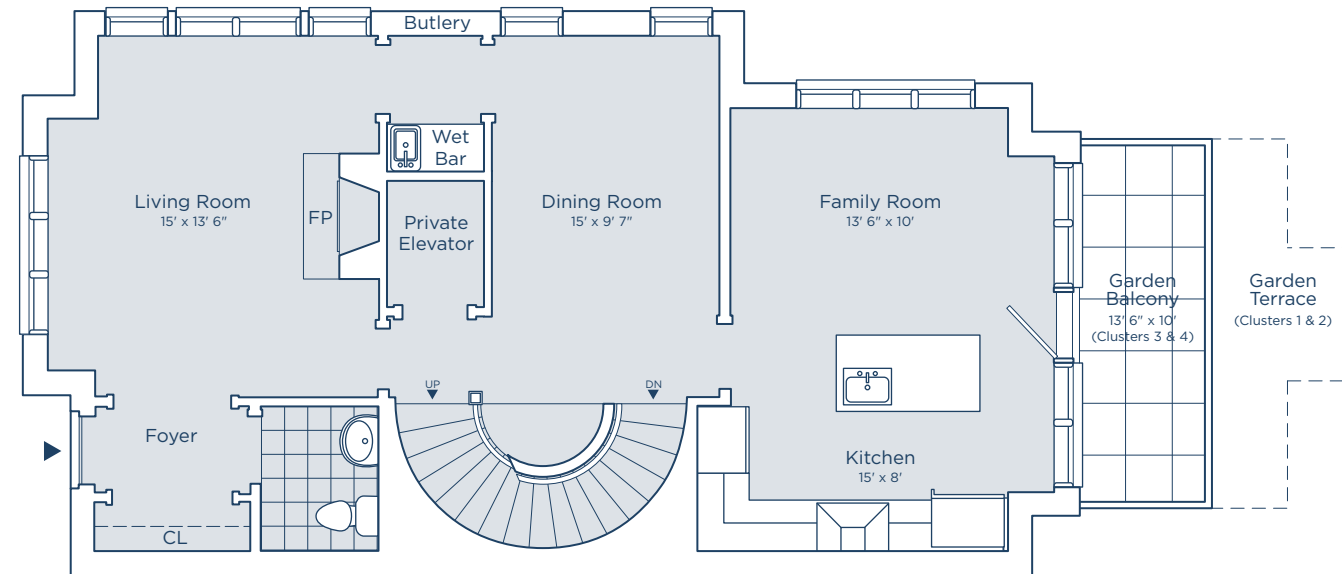
Hardwood Floors Throughout

Crown Molding on Main Living Level and in  
Master Bedroom

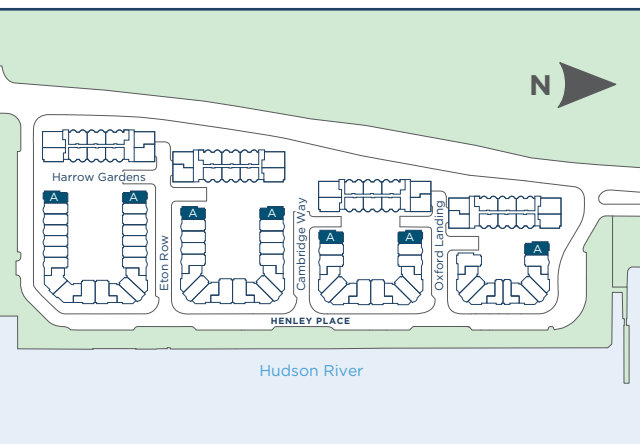
Recessed Lighting on Main Living Level and in  
Master Bedroom



Ground Floor



First Floor



SCALE: 1/8" = 1'



1 of 2

Floor plans and renderings are artist's concept. Prices, terms, dimensions, square footage and features are approximate and subject to change without notice. All information included herein is approximate and subject to change. Developer reserves the right to make modifications, changes or additions to all plans and designs. Builder may substitute certain products or items as it deems appropriate, from time to time. All drawings are artist's conception. In deciding to purchase a home, purchasers agree to rely only on the final contract document and not on any information contained herein. Site plan is for illustrative purposes only. Building locations, roadways, landscaping and parking configurations may change as construction progresses. Windows shown on floor plans may differ by location and floor level.

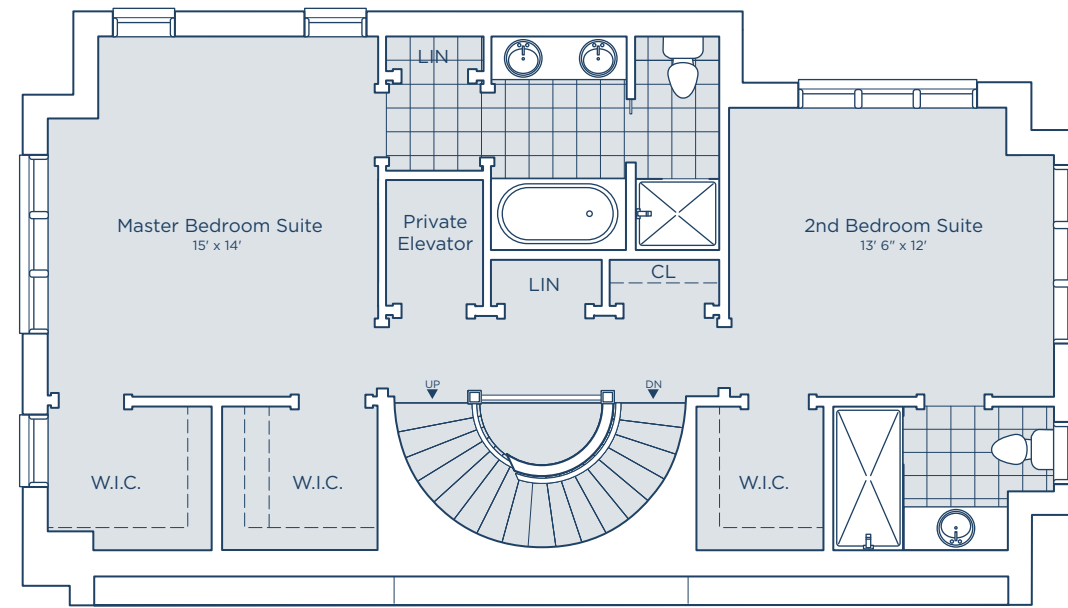


HENLEY ON HUDSON

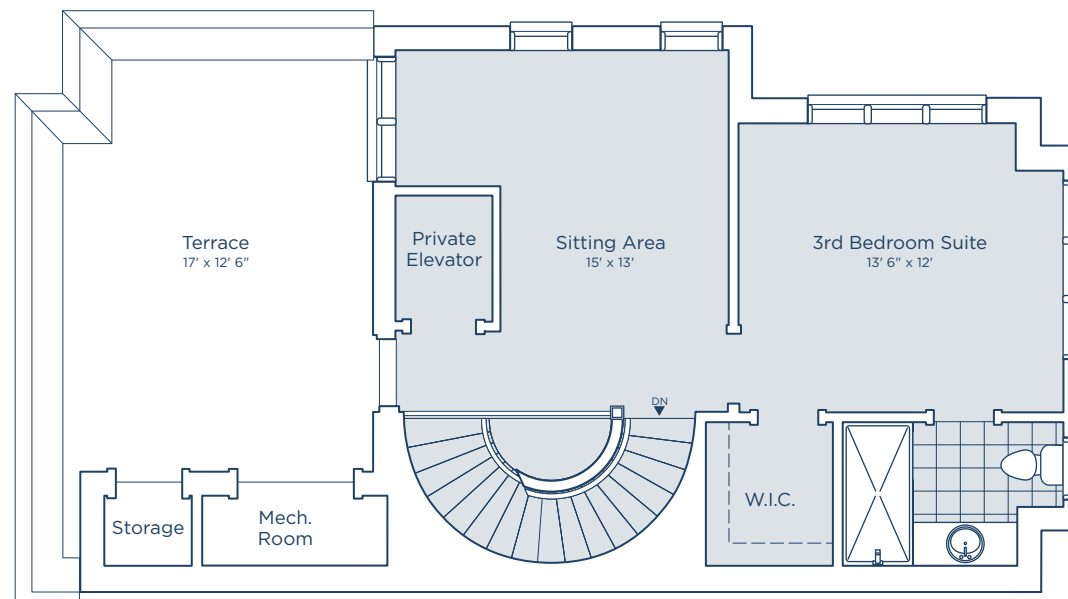
AT PORT IMPERIAL  
WEEHAWKEN, NEW JERSEY

# TOWNHOME

## Second & Third Floors



Second Floor



Third Floor



Floor plans and renderings are artist's concept. Prices, terms, dimensions, square footage and features are approximate and subject to change without notice. All information included herein is approximate and subject to change. Developer reserves the right to make modifications, changes or additions to all plans and designs. Builder may substitute certain products or items as it deems appropriate, from time to time. All drawings are artist's conception. In deciding to purchase a home, purchasers agree to rely only on the final contract document and not on any information contained herein. Site plan is for illustrative purposes only. Building locations, roadways, landscaping and parking configurations may change as construction progresses. Windows shown on floor plans may differ by location and floor level.