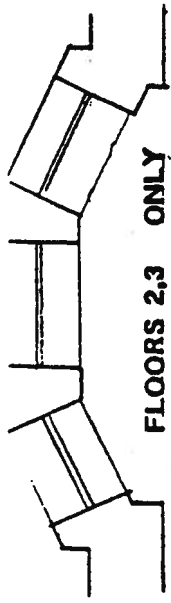


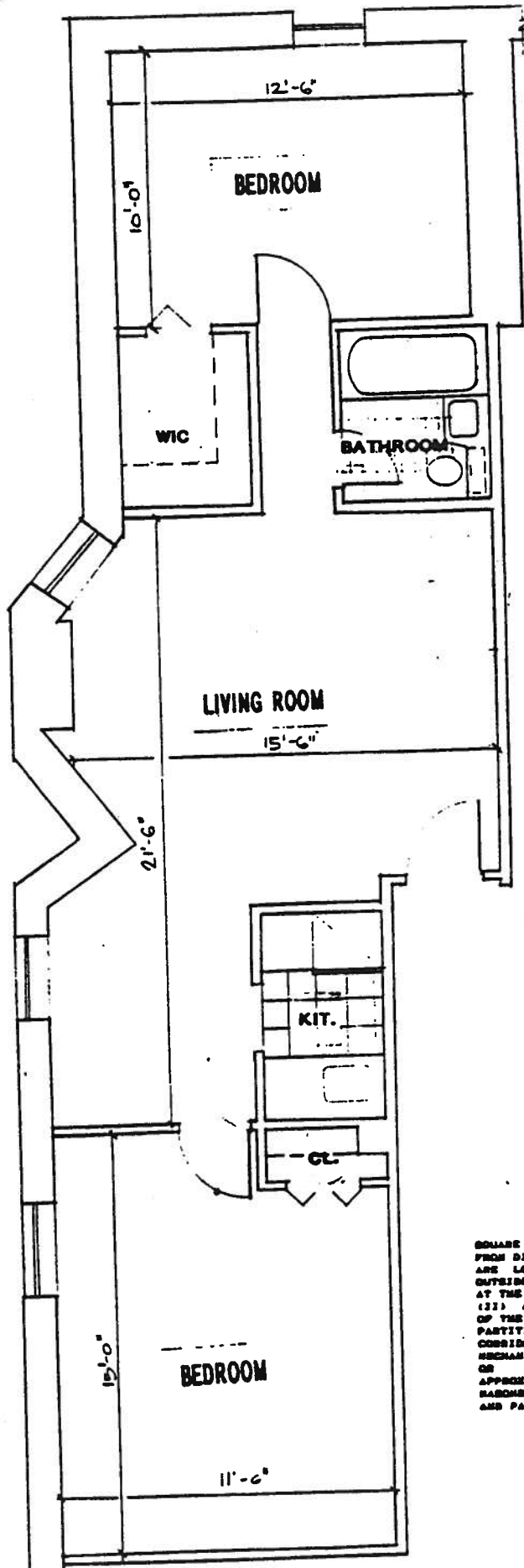
638 SQ. FT.(FLRS.2 & 3)

623 SQ. FT.(FLRS.4 & 5)



SQUARE FOOTAGE INDICATED ARE CALCULATED FROM DIMENSIONS WHICH ARE APPROXIMATE AND ARE LOCATED (I) APPROXIMATELY TO THE OUTSIDE FACE OF THE BRICK OR MASONRY WORK AT THE EXTERIOR WALLS OF THE BUILDING; (II) APPROXIMATELY TO THE CORRIDOR SIDE OF THE MASONRY OR SHEETROCK WALLS OR PARTITIONS DIVIDING THE UNITS FROM CORRIDORS, STAIRS ELEVATOR, AND OTHER MECHANICAL SPACES AND (III) WHERE MASONRY OR SHEETROCK WORK DIVIDES UNITS, APPROXIMATELY TO THE CENTERLINE OF THE MASONRY OR SHEETROCK WORK OF THE WALLS AND PARTITIONS DIVIDING THE UNITS.

76 W.85 ST. UNIT E



775 SQ. FT.(FLRS.2,3 & 4)



SQUARE FOOTAGE INDICATED ARE CALCULATED FROM DIMENSIONS WHICH ARE APPROXIMATE AND ARE LOCATED (I) APPROXIMATELY TO THE OUTSIDE FACE OF THE BRICK OR MASONRY WORK AT THE EXTERIOR WALLS OF THE BUILDING; (II) APPROXIMATELY TO THE CORRIDOR SIDE OF THE MASONRY OR SHEETROCK WALLS OR PARTITIONS DIVIDING THE UNITS FROM CORRIDORS, STAIRS ELEVATOR, AND OTHER MECHANICAL SPACES AND (III) WHERE MASONRY OR SHEETROCK WORK DIVIDES UNITS, APPROXIMATELY TO THE CENTERLINE OF THE MASONRY OR SHEETROCK WORK OF THE WALLS AND PARTITIONS DIVIDING THE UNITS.

76 W.45 ST. UNIT: 8