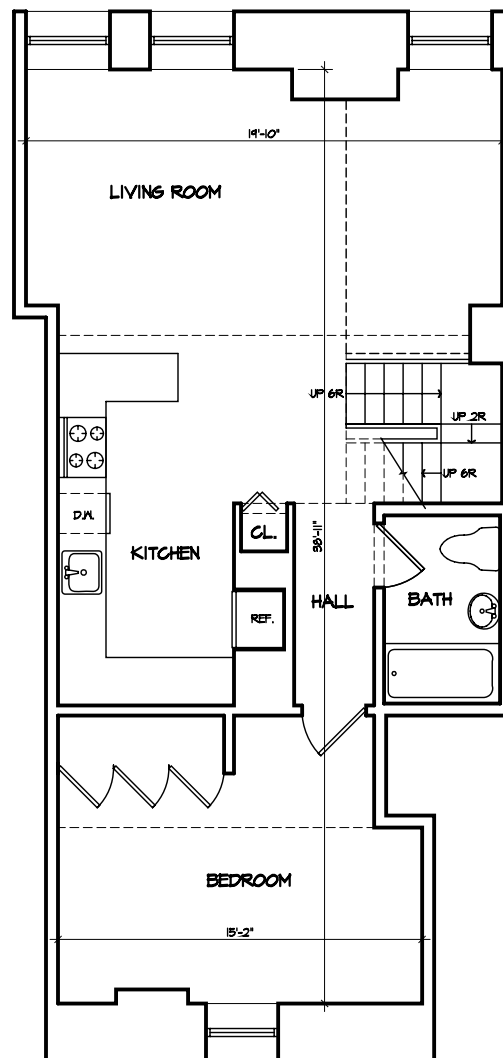


**UNIT 530
EXISTING CONDITIONS
UPPER LEVEL PLAN**

1/8" = 1'-0"

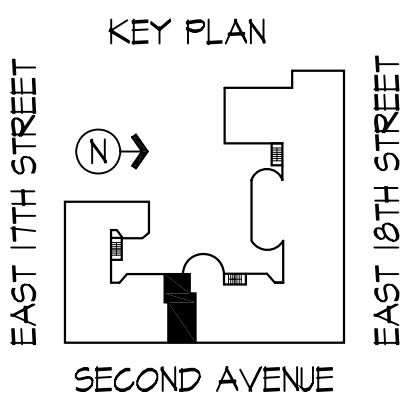
2ND LEVEL = 291 SF



**UNIT 530
EXISTING CONDITIONS
LOWER LEVEL PLAN**

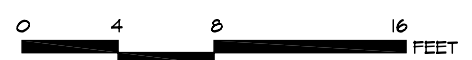
1/8" = 1'-0"

1ST LEVEL = 790 SF



530

TOTAL AREA-UNIT 530 = 1081 S.F.



FINAL 4-2007