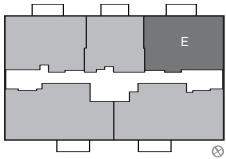




## apartments 3-10E



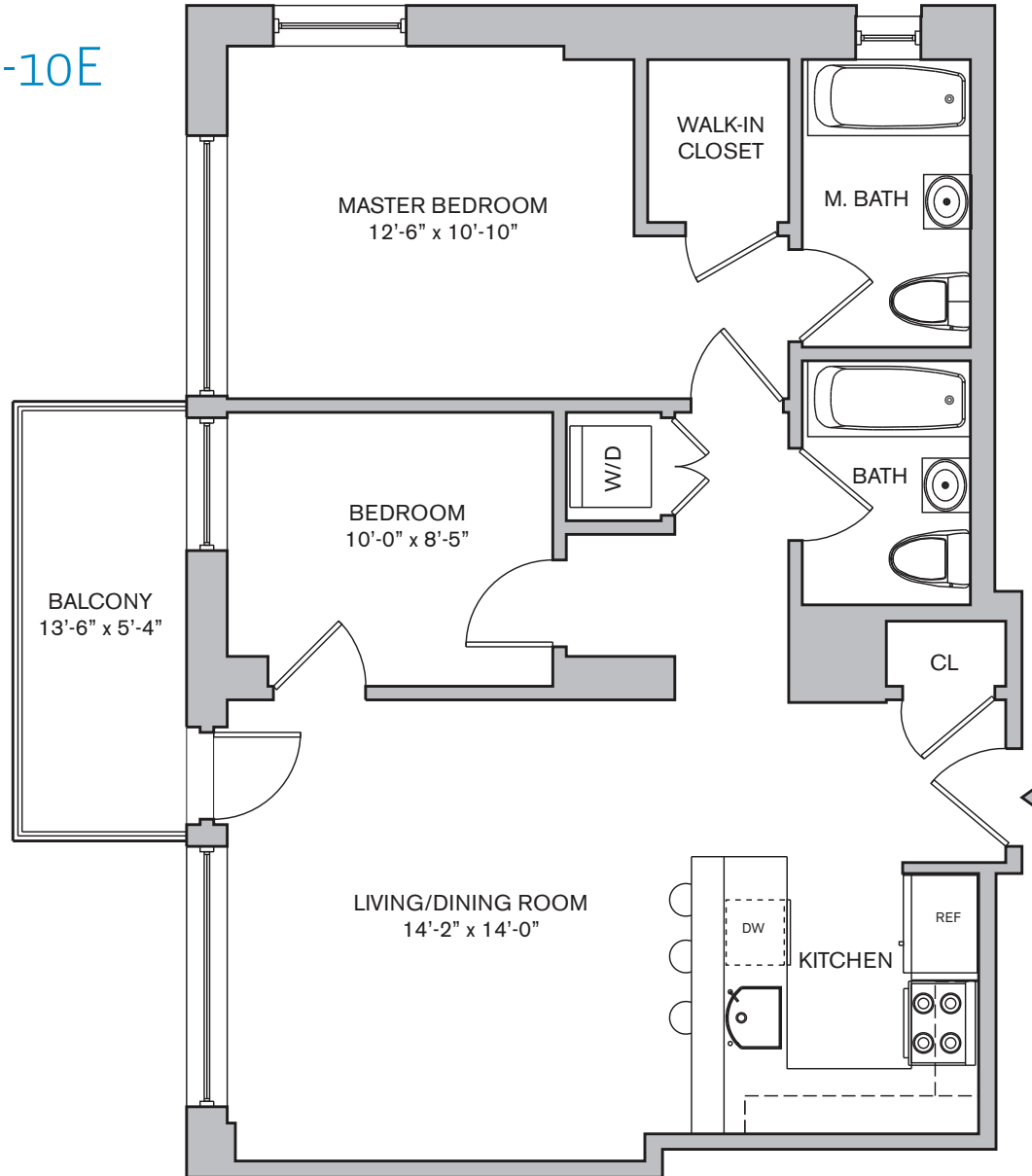
**2 BEDROOMS**  
**2 BATHS**  
**BALCONY**  
**913 SQUARE FEET INTERIOR**  
**72 SQUARE FEET EXTERIOR**  
**NORTH/EAST EXPOSURES**



**Presentation Center**  
162 16th Street Brooklyn, NY 11215  
T 718.788.6100 F 718.788.6110  
sales@vueparkslope.com  
vueparkslope.com  
text VUE to: 84444

Exclusive Sales and Marketing Agent:

**AGUAYO & HUEBENER**  
ahbrooklyn.com



### building amenities

- Concrete superstructure
- Brick and glass facade
- Stylish modern lobby
- On site fitness center
- Kids Play Area
- Private storage rooms
- Common landscaped front yard
- Common meditation garden
- On site parking for 32 cars
- Interior lobby lounge
- 2 Elevators
- Video Intercom
- Pre-wired for high speed internet and cable
- Trash chute and compactor

### apartment finishes

- Floor to ceiling or full height tilt and turn lockable windows
- Private balconies
- Amazing views
- 9 foot ceilings
- 5" Brazilian cherry floors
- Frigidaire stackable W/D
- Hot water included in common charges
- Separate gas meter located in kitchen
- PTAC units provide heating and cooling
- Gas Heat
- Solid Core 8ft. doors
- Satin Finish Hardware

### kitchen

- American walnut and white acid etched cabinets
- Blue Motion self closing doors
- Ceasarstone countertops
- Ceasarstone backsplashes
- Bosch Refrigerator, Microwave, Dishwasher
- GE Ranges

### master bathroom

- Custom Cherry wood vanities with Quartz countertops
- 16" deep tubs
- 12"x24" Cremita Italian Limestone
- Whitesand Mosaic Italian Limestone floors
- Toto Toilets

### guest bathroom

- Custom vanities with Quartz countertops
- 16" deep tubs
- 12"x24" Cremita Italian Limestone
- Bamboo Oyster Italian Porcelain floors
- Stile Bianco and Techno Vanilla Italian Porcelain Mosaic Walls
- Toto Toilets

